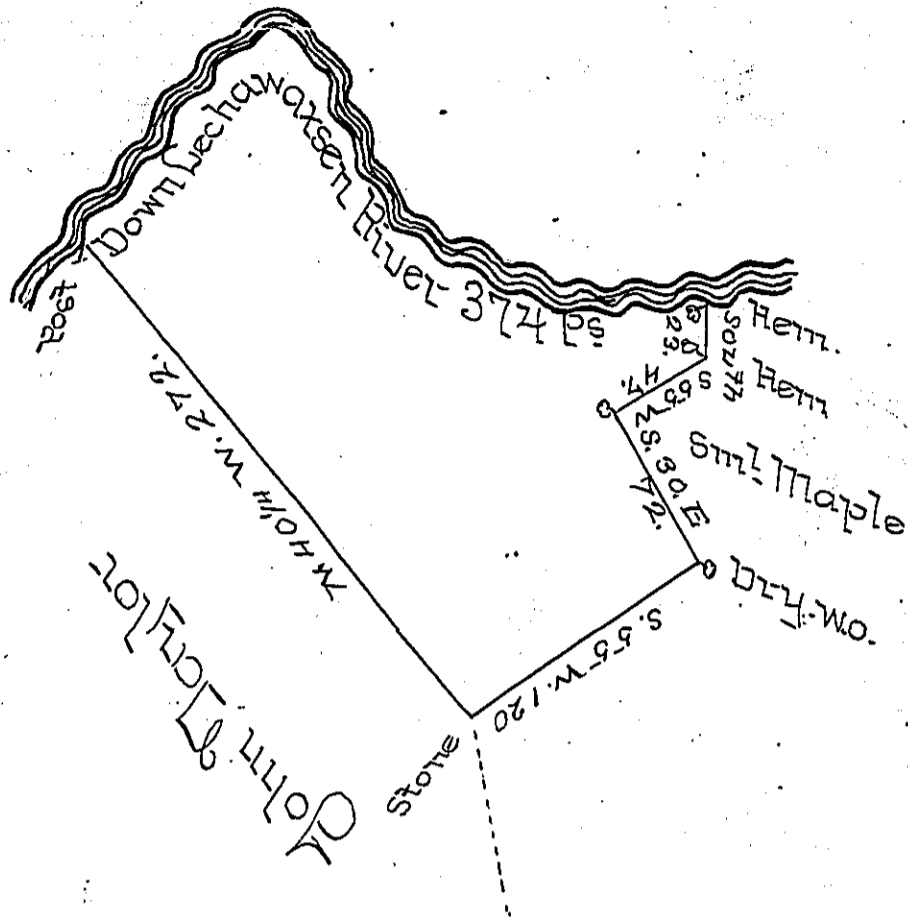


Courses & distances down
Bechtawaxsen River

- 1. N. E. 20
 - 2. N. 38. E. 65
 - 3. N. 53. E. 39
 - 4. East 16
 - 5. S. 32 E. 20
 - 6. S. 17 E. 40
 - 7. S. 39 E. 30
 - 8. S 59. E. 56
 - 9. S. 71. E. 29
 - 10. S 85. E. 28
 - 11. N 83 E. 31
- 374



By Virtue of a Warrant dated the 27 July 1784 Surveyed the
24th October 1784 to Thomas Wiggins Jun^r the above Des-
cribed tract of Land situate on the South side of Becha-
waxsen River about two miles from the Mouth in Nor-
thampton County Containing Two hundred and twenty
seven Acres One hundred perches and the Allowance of
six p Cent &c^a -

P^o Geo. Palmer

To John Lukens Esquire }
Surveyor General - }

IN TESTIMONY that the above is a copy of the original remaining on file in
the Department of Internal Affairs of Pennsylvania, made
conformably to an Act of Assembly approved the 16th day of
February, 1833, I have hereunto set my Hand and caused
the Seal of said Department to be affixed at Harrisburg,
this seventh day of March 1899.

James W. Latta
Secretary of Internal Affairs.